

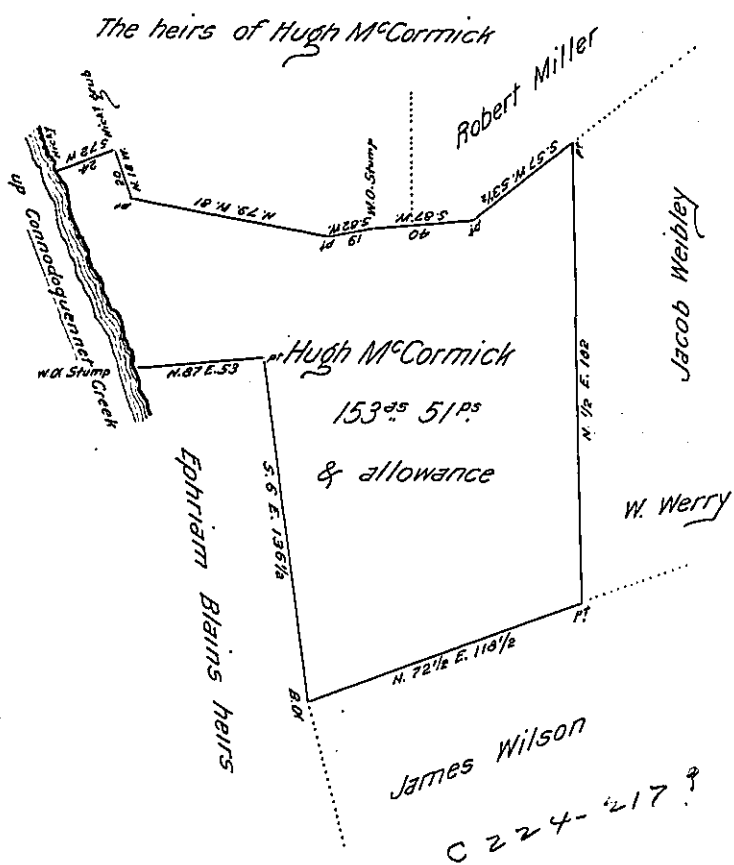
Courses and distances up
Cannadoquennet Creek

S. 13 E. 18 1/4

S. 28 E 24

S. 2 1/2 E. 41 3/4

84.



A Draught of a Tract of land situate in South Middleton Township Cumberland County Containing 153²⁵ 51^{P°} and allowance of six per Cent for Roads &c. Surveyd in pursuance of a warrant granted to Hugh M°Cormick dated the 18th Day of August 1768.

I Certify that the above is a Copy of a Draught Remaining in the Deputy surveyors Office at Carlisle Sept^r 2^d 1814

To Rich^d T. Leech Esqr

W^m Line D.S.

Surveyor General Pa

Cumberland County Sc^t

Before me the subscriber one of the Justices of the Peace in and for said County personally came Patrick Davidson and Robert Blaine and being sworn according to law depose and say that the land included in the above survey and held by a warrant granted to Hugh M°Cormick dated the 18th August 1768 has been held in quiet and peaceable possession by Hugh M°Cormick for twenty one years and upwards last past and by his father Hugh M°Cormick Elder in his life time for many years before the said Hugh M°Cormick the present possessor came into

IN TESTIMONY that the above is a copy of the original remaining on file in the Department of Internal Affairs of Pennsylvania, made conformably to an Act of Assembly approved the 16th day of February, 1833, I have hereunto set my Hand and caused the Seal of said Department to be affixed at Harrisburg, this

thirtieth day of April 1906.

Loach
Secretary of Internal Affairs.